

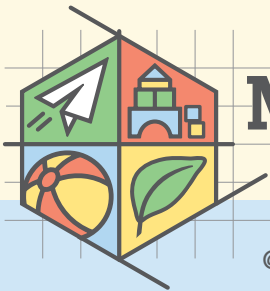
How many?

What can you count?



How many are there?

How did you count them?

Keep going! What else can you count?



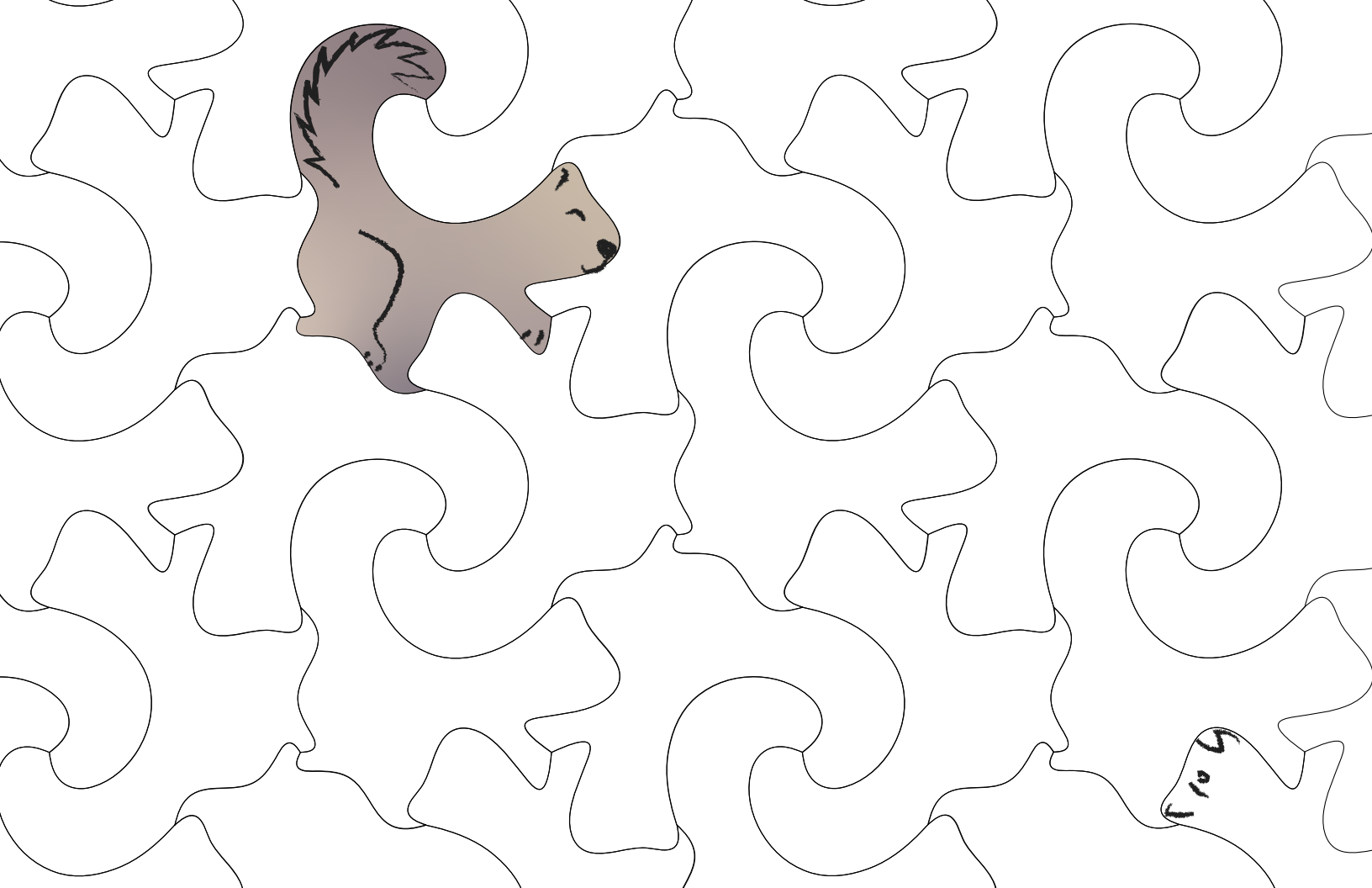
MATH
Anywhere

@mathanywhere   

www.mathanywhere.org

Play this game anywhere!

EDUCATIONAL SERVICE DISTRICT **112**



Same or different?

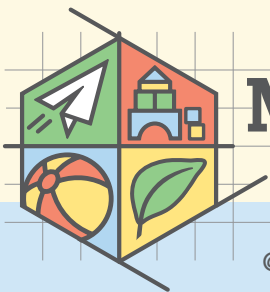
What makes them the same?

What makes them different?



Keep going! Can you think of another idea?



Play this game anywhere!

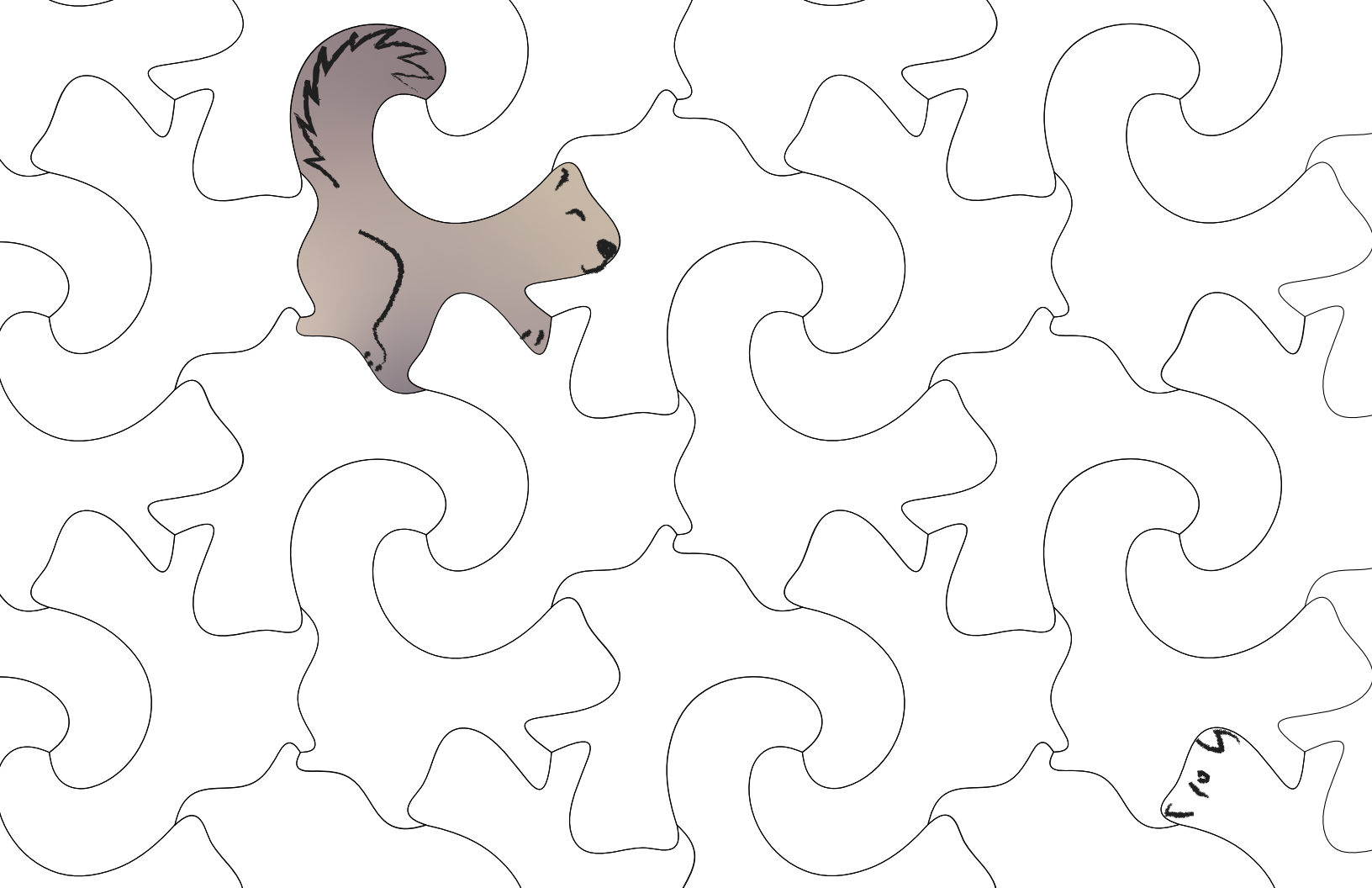


MATH
Anywhere

@mathanywhere   

www.mathanywhere.org

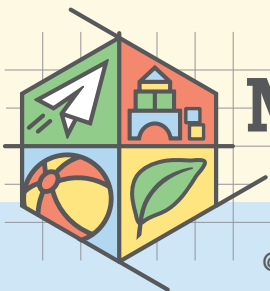
EDUCATIONAL
SERVICE DISTRICT 



Which one doesn't belong?

Why?

Keep going! Can you think of another idea?



MATH
Anywhere

@mathanywhere   

www.mathanywhere.org

Play this game anywhere!

EDUCATIONAL SERVICE DISTRICT 